

Musical MIDI Accompaniment



Chord Reference Manual

This document was prepared from version 15.12 of MMA.

Bob van der Poel
Wynndel, BC, Canada

bob@mellowood.ca

December 15, 2015

Chapter 1

Chord Reference

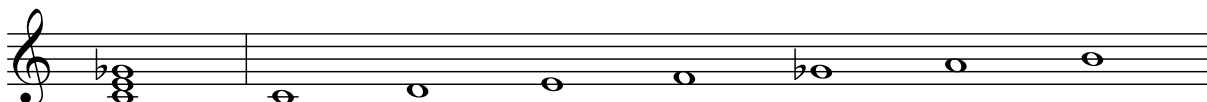
This document is a reference to the chords and scales use in *MtA*. It has been generated directly from the module `chordtable.py` in the *MtA* sources. Each section shows the chord name, a brief description, the chord notes for a “C” chord, and the associated scale tones. These chords and scales are used in *MtA* to generate chords, bass, arpeggios, arias, harmonies and scales.

In all cases you will need to preface the name with a chord pitch. For example, the reference for an 11th chord is listed simply as “11”; you would use a “C11” or “Eb11”, etc. in your *MtA* source file. Read the *MtA* Reference Guide if you don’t understand this.

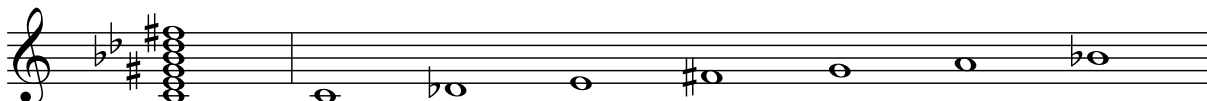
This document was prepared as a reference to verify the correctness of the chords and scales used in *MtA*. If you find an error, please let the author know.

MtA defines 93 unique chords plus 62 aliases. Chords used in *MtA* via aliased names are listed after the main name.

(b5) — Major triad with flat 5th.



+7b9#11 — Augmented 7th with flat 9th and sharp 11th.



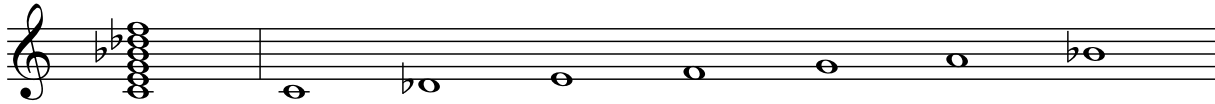
11 — 9th chord plus 11th (3rd not voiced).



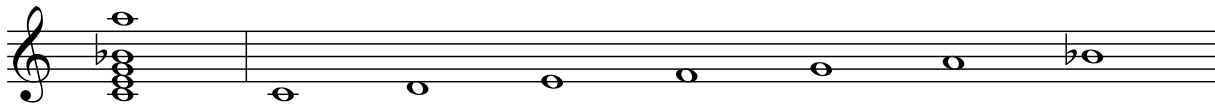
11+, 11 \sharp 5 — Augmented 11th (sharp 5).



11 \flat 9 — 7th chord plus flat 9th and 11th.



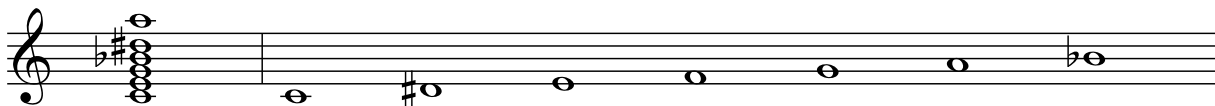
13 — 7th (including 5th) plus 13th (the 9th and 11th are not voiced).



13 \sharp 11 — 7th plus sharp 11th and 13th (9th not voiced).



13 \sharp 9 — 7th (including 5th) plus 13th and sharp 9th (11th not voiced).



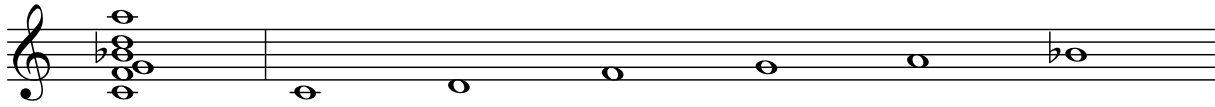
13 \flat 5 — 7th with flat 5th, plus 13th (the 9th and 11th are not voiced).



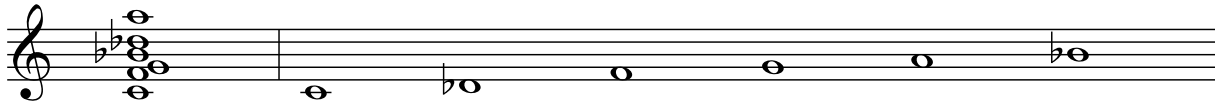
13 \flat 9, M7(add13) — 7th (including 5th) plus 13th and flat 9th (11th not voiced).



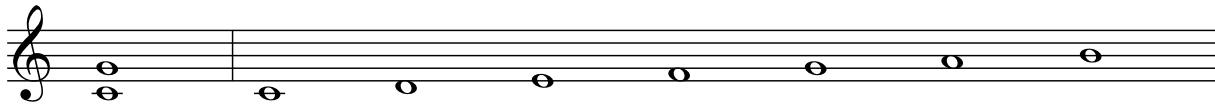
13sus, 13sus4 — 7sus, plus 9th and 13th



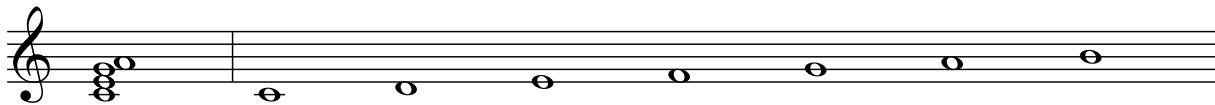
13susb9 — 7sus, plus flat 9th and 13th



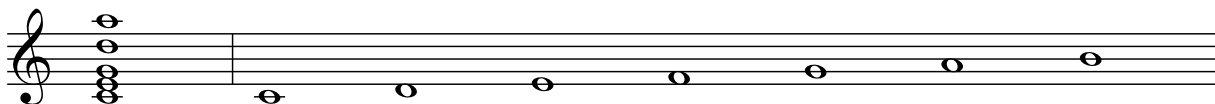
5 — Altered Fifth or Power Chord; root and 5th only.



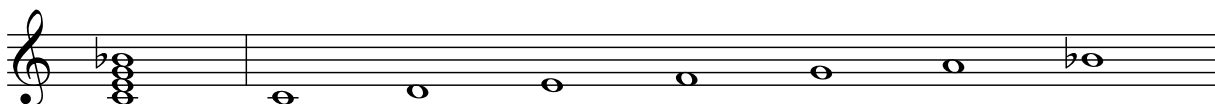
6, M6 — Major triad with added 6th.



6(add9), 69 — 6th with added 9th. This is sometimes notated as a slash chord in the form “6/9”.



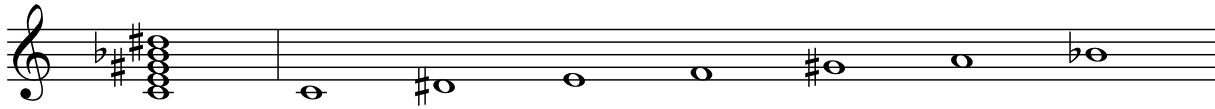
7 — 7th.



7#11 — 7th plus sharp 11th (9th omitted).



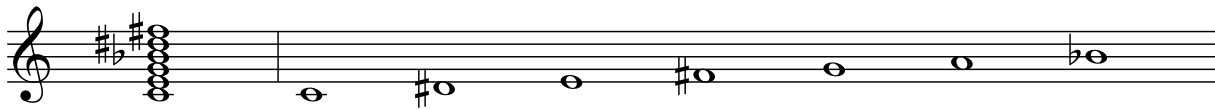
7 \sharp 5 \sharp 9 — 7th with sharp 5th and sharp 9th.



7 \sharp 9, 7+9 — 7th with sharp 9th.



7 \sharp 9 \sharp 11 — 7th plus sharp 9th and sharp 11th.



7 \sharp 9 \flat 13 — 7th with sharp 9th and flat 13th.



7(6) — 7th with added 6th.



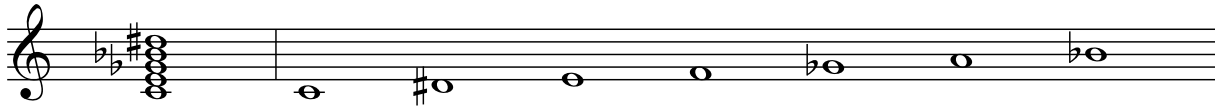
7 \flat 13 — 7th (including 5th) plus flat 13th (the 9th and 11th are not voiced).



7 \flat 5, 7-5 — 7th, flat 5.



7 \flat 5 \sharp 9 — 7th with flat 5th and sharp 9th.



7 \flat 5 \flat 9, 7alt — 7th with flat 5th and flat 9th.



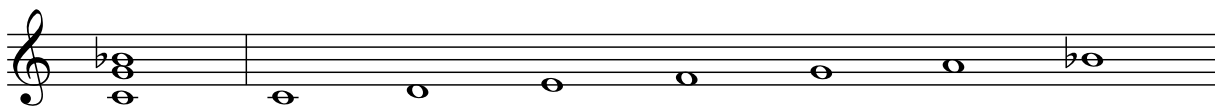
7 \flat 9, 7-9 — 7th with flat 9th.



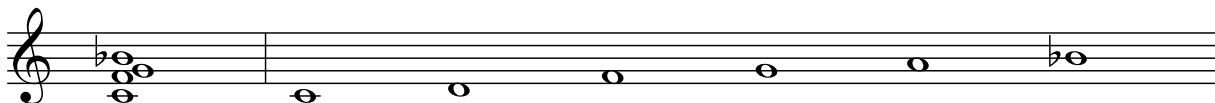
7 \flat 9 \sharp 11 — 7th plus flat 9th and sharp 11th.



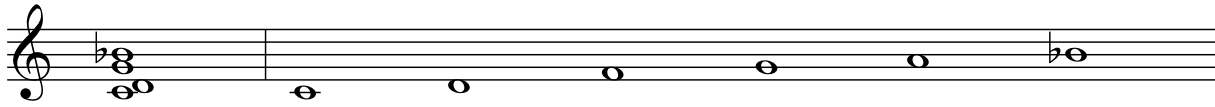
7omit3, 7(omit3) — 7th with unvoiced 3rd.



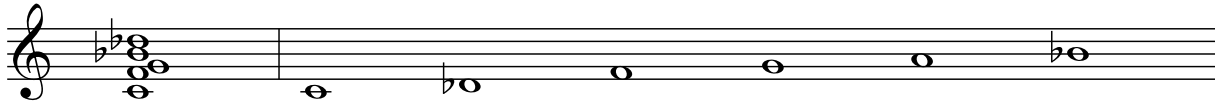
7sus, 7sus4 — 7th with suspended 4th, dominant 7th with 3rd raised half tone.



7sus2 — A sus2 with dominant 7th added.



7sus \flat 9, 7 \flat 9sus — 7th with suspended 4th and flat 9th.



9 — 7th plus 9th.



9 \sharp 11 — 7th plus 9th and sharp 11th.



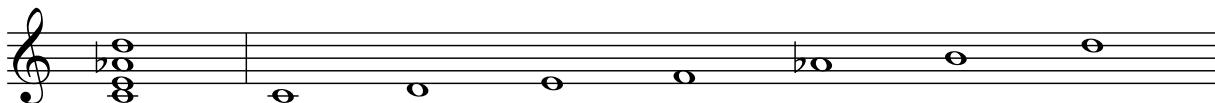
9 \sharp 5, aug9, 9+, +9, 9+5 — 7th plus 9th with sharp 5th (same as aug9).



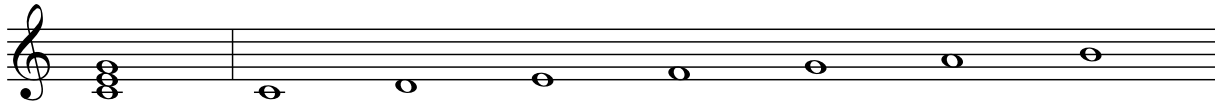
9 \flat 5, 9-5 — 7th plus 9th with flat 5th.



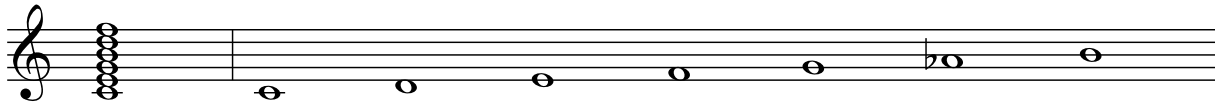
9 \flat 6 — 9th with flat 6 (no 5th or 7th).



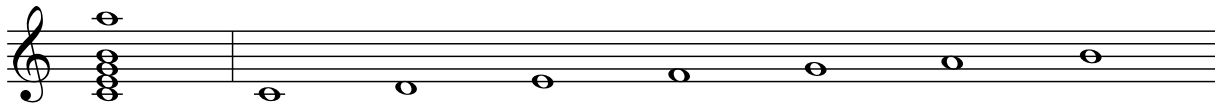
M — Major triad. This is the default and is used in the absence of any other chord type specification.



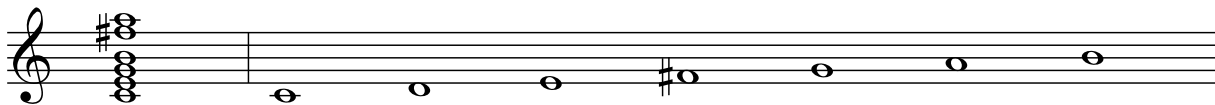
M11 — Major 9th plus 11th.



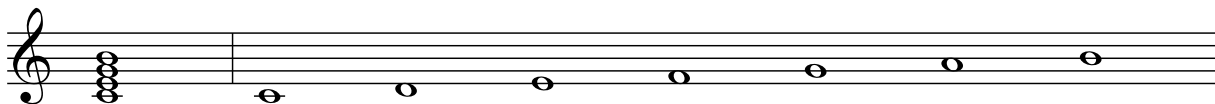
M13, maj13 — Major 7th (including 5th) plus 13th (9th and 11th not voiced).



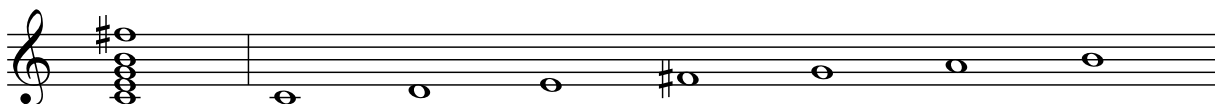
M13#11 — Major 7th plus sharp 11th and 13th (9th not voiced).



M7, maj7 — Major 7th.



M7#11 — Major 7th plus sharp 11th (9th omitted).



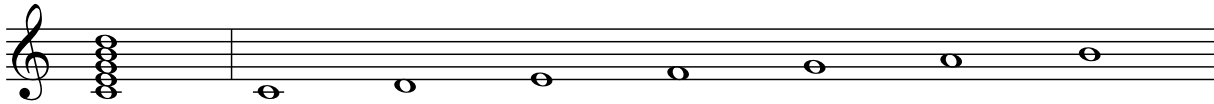
M7#5, +M7, M7+5 — Major 7th with sharp 5th.



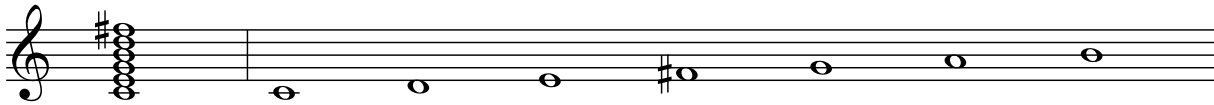
M7^b5, M7-5 — Major 7th with a flat 5th.



M9, maj9 — Major 7th plus 9th.



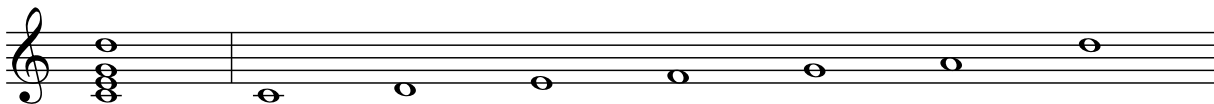
M9[#]11 — Major 9th plus sharp 11th.



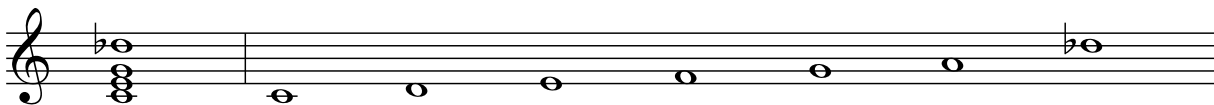
add[#]9, (add[#]9) — Major chord plus sharp 9th (no 7th.)



add9, (add9) — Major chord plus 9th (no 7th.)



add^b9, (add^b9) — Major chord plus flat 9th (no 7th.)



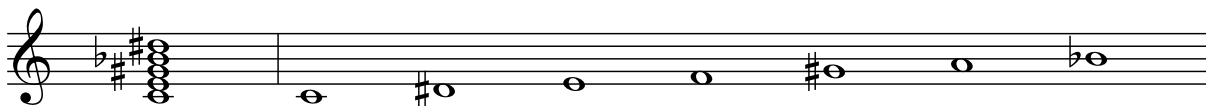
aug, +, [#]5 — Augmented triad.



aug7, +7, 7+, 7 \sharp 5, 7+5 — An augmented chord (raised 5th) with a dominant 7th.



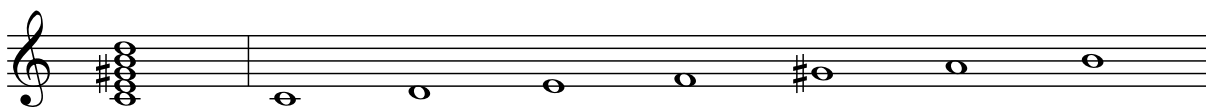
aug7 \sharp 9, +7 \sharp 9 — An augmented chord (raised 5th) with a dominant 7th and sharp 9th.



aug7 \flat 9, +7 \flat 9, 7 \sharp 5 \flat 9 — An augmented chord (raised 5th) with a dominant 7th and flat 9th.



aug9M7, +9M7 — An augmented chord (raised 5th) with a major 7th and 9th.



dim7, dim, \circ — Diminished seventh.



dim7(addM7), \circ (addM7) — Diminished triad with added Major 7th.



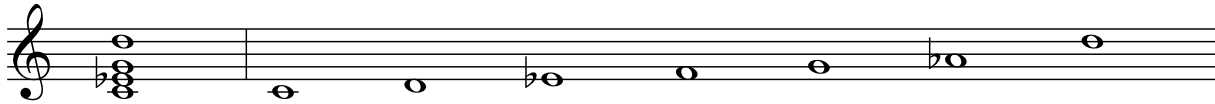
m — Minor triad.



m \sharp 5, m+5, m+ — Minor triad with augmented 5th.



m(sus9), m(add9) — Minor triad plus 9th (no 7th).



m+7 \sharp 9 — Augmented minor 7 plus sharp 9th.



m+7b9 — Augmented minor 7 plus flat 9th.



m+7b9 \sharp 11 — Augmented minor 7th with flat 9th and sharp 11th.



m11 — 9th with minor 3rd, plus 11th.



m11b5 — Minor 7th with flat 5th plus 11th.



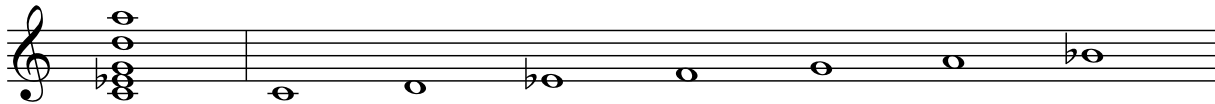
m13 — Minor 7th (including 5th) plus 13th (9th and 11th not voiced).



m6 — Minor 6th (flat 3rd plus a 6th).



m6(add9), m69 — Minor 6th with added 9th. This is sometimes notated as a slash chord in the form “m6/9”.



m7 — Minor 7th (flat 3rd plus dominant 7th).



m7#5 — Minor 7th with sharp 5th.



m7#9, m7(#9) — Minor 7th with added sharp 9th.



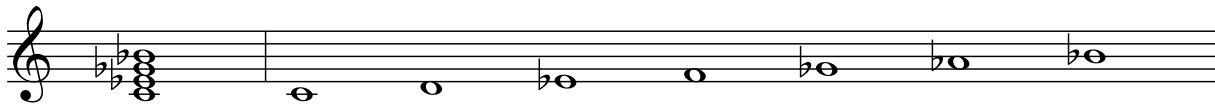
m7(add11) — Minor 7th plus 11th.



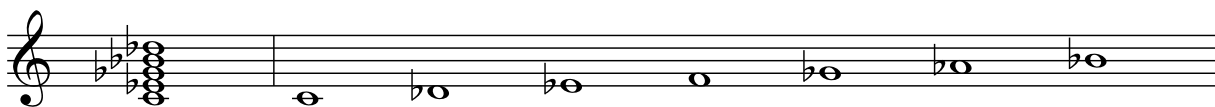
m7(add13) — Minor 7th plus 13th.



m7b5, m7-5, ø — Minor 7th, flat 5 (aka 1/2 diminished).



m7b5b9 — Minor 7th with flat 5th and flat 9th.



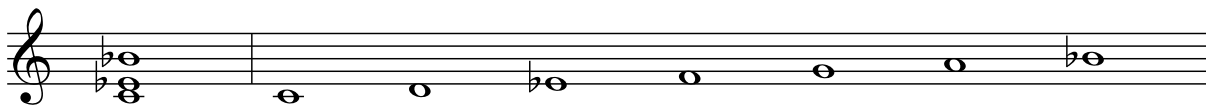
m7b9, m7(b9) — Minor 7th with added flat 9th.



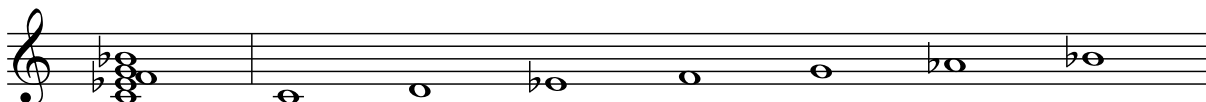
m7b9#11 — Minor 7th plus flat 9th and sharp 11th.



m7omit5, m7(omit5) — Minor 7th with unvoiced 5th.



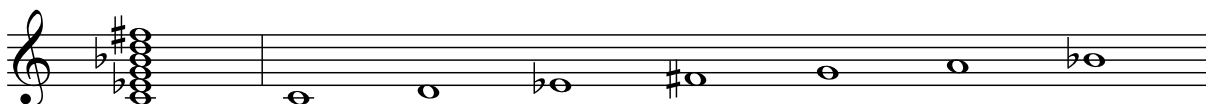
m7sus4, m7sus — Minor suspended 4th, minor triad plus 4th and dominant 7th.



m9 — Minor triad plus 7th and 9th.



m9#11 — Minor 7th plus 9th and sharp 11th.



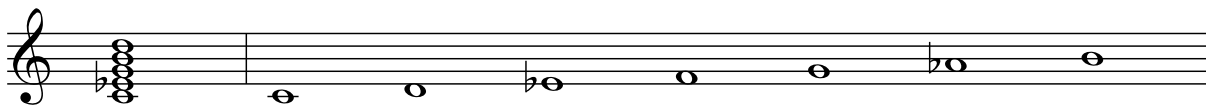
m9b5 — Minor triad, flat 5, plus 7th and 9th.



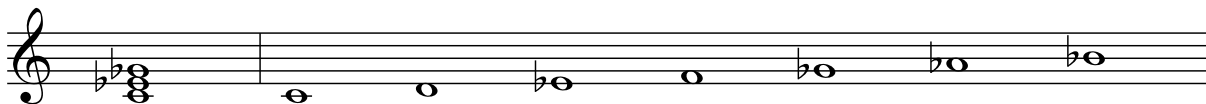
mM7, m(maj7), m+7, min(maj7), min#7, m#7 — Minor Triad plus Major 7th. You will also see this printed as “m(maj7)”, “m+7”, “min(maj7)” and “min#7” (which *MuA* accepts); as well as the *MuA* invalid forms: “-(Δ7)”, and “min♮7”.



mM7(add9) — Minor Triad plus Major 7th and 9th.



m♭5, m(b5), °3, dim3 — Minor triad with flat 5th (aka dim).



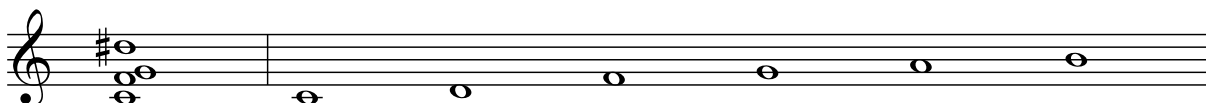
msus4, msus — Minor suspended 4th, minor triad plus 4th.



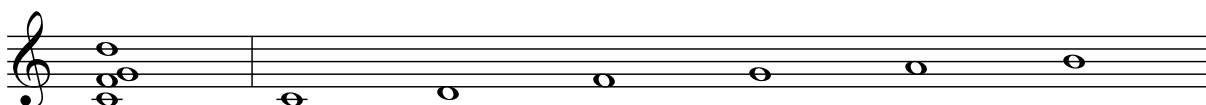
omit3add9, omit3(add9) — Triad: root, 5th and 9th.



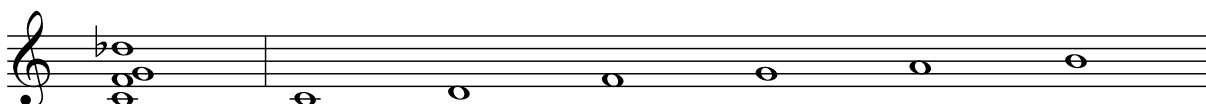
sus(add♯9) — Suspended 4th, major triad with the 3rd raised half tone plus sharp 9th.



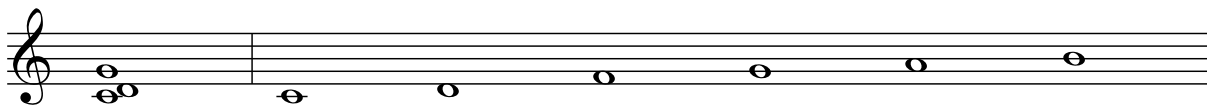
sus(add9) — Suspended 4th, major triad with the 3rd raised half tone plus 9th.



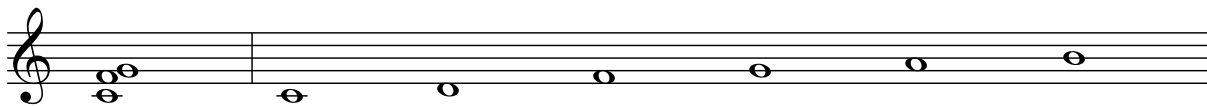
sus(add♭9) — Suspended 4th, major triad with the 3rd raised half tone plus flat 9th.



sus2 — Suspended 2nd, major triad with the major 2nd above the root substituted for 3rd.



sus4, sus — Suspended 4th, major triad with the 3rd raised half tone.



sus9, 9sus, 9sus4 — 7sus plus 9th.



Index of Chords

#5 9	7b5b9 6	M 8	mb5 15
(b5) 2	7b5#9 6	M11 8	m#5 11
(addb9) 9	7b9 6	M13 8	m#7 14
(add#9) 9	7b9#11 6	M13#11 8	m(b5) 15
(add9) 9	7b9sus 7	M6 4	m(add9) 11
+7b9#11 2	7#11 4	M7 8	m(maj7) 14
+7b9 10	7#5b9 10	M7b5 9	m(sus9) 11
+7#9 10	7#5#9 5	M7#11 8	m+5 11
+7 10	7#5 10	M7#5 8	m+7b9 11
+9M7 10	7#9 5	M7(add13) 3	m+7b9#11 11
+9 7	7#9b13 5	M7+5 8	m+7#9 11
+M7 8	7#9#11 5	M7-5 9	m+7 14
+ 9	7(6) 5	M9 9	m+ 11
11 2	7(omit3) 6	M9#11 9	m11 11
11b9 3	7+5 10	ø 13	m11b5 11
11#5 3	7+9 5	°(addM7) 10	m13 12
11+ 3	7+ 10	°3 15	m6 12
13 3	7-5 5	° 10	m6(add9) 12
13b5 3	7-9 6	addb9 9	m69 12
13b9 3	7alt 6	add#9 9	m7 12
13#11 3	7omit3 6	add9 9	m7b5 13
13#9 3	7sus 6	aug 9	m7b5b9 13
13sus 4	7susb9 7	aug7 10	m7b9 13
13susb9 4	7sus2 7	aug7b9 10	m7b9#11 13
13sus4 4	7sus4 6	aug7#9 10	m7#5 12
5 4	9 7	aug9M7 10	m7#9 12
6 4	9b5 7	aug9 7	m7(b9) 13
6(add9) 4	9b6 7	dim3 15	m7(#9) 12
69 4	9#11 7	dim7 10	m7(add11) 13
7 4	9#5 7	dim7(addM7) 10	m7(add13) 13
7b13 5	9+5 7	dim 10	m7(omit5) 14
7b5 5	9+ 7	m 10	m7-5 13
	9-5 7		m7omit5 14
	9sus4 16		m7sus4 14
	9sus 16		m7sus 14

m9	14	maj7	8	omit3(add9) ..	15	sus(add9)	15
m9\flat5	14	maj9	9	omit3add9 ...	15	sus2	16
m9\sharp11	14	min\sharp7	14	sus(add\flat9) ...	15	sus4	16
mM7	14	min(maj7)	14	sus(add\sharp9) ...	15	sus9	16
mM7(add9) ..	15	msus4	15			sus	16
maj13	8	msus	15				